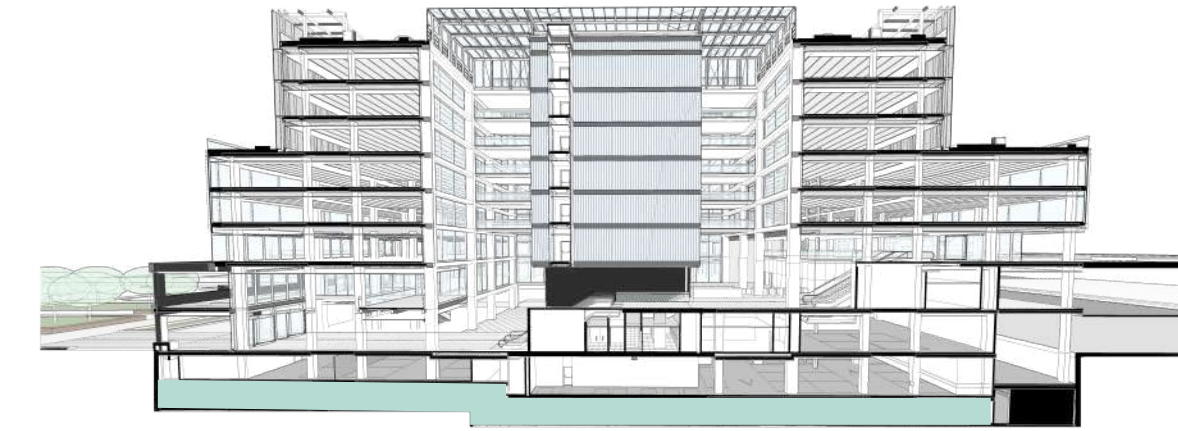




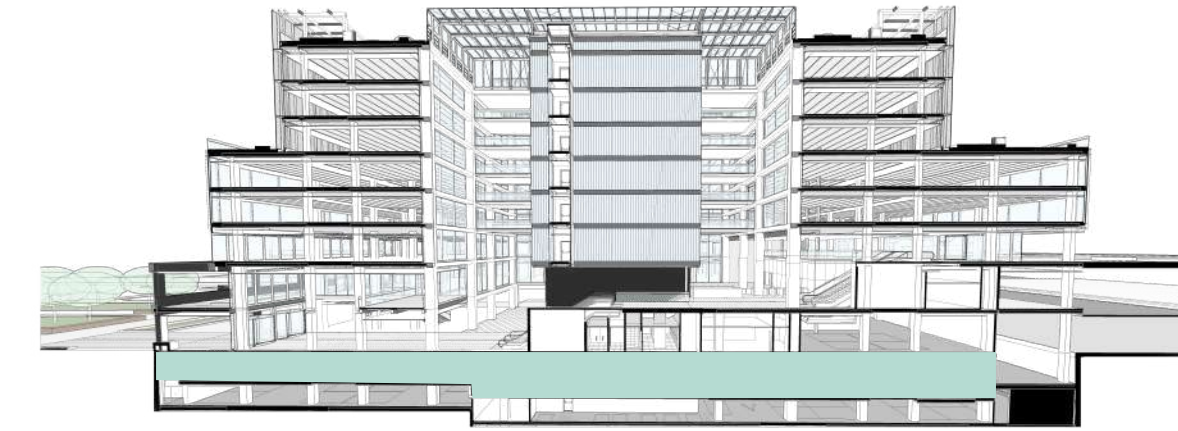
PLANOS DEL EDIFICIO



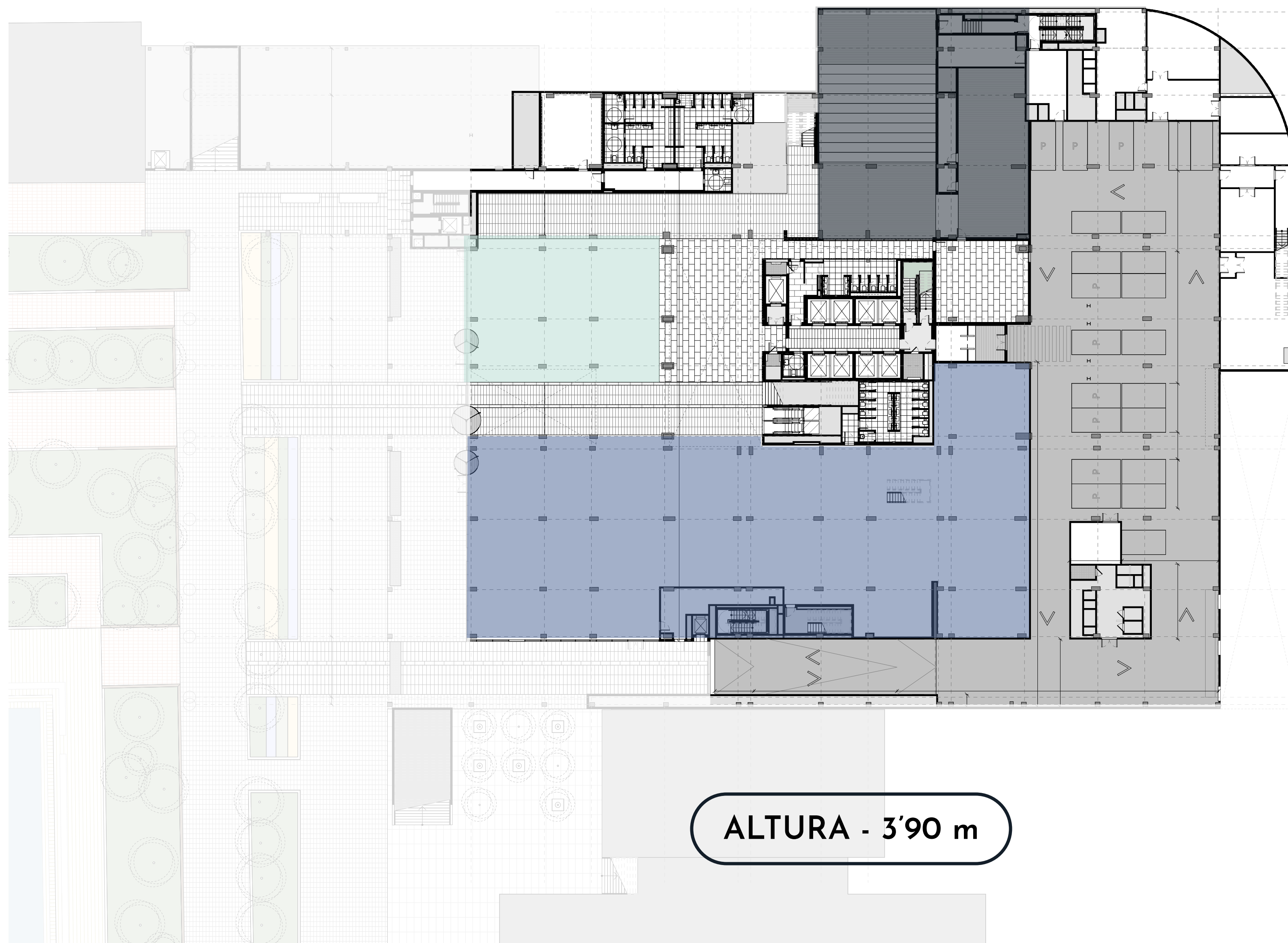
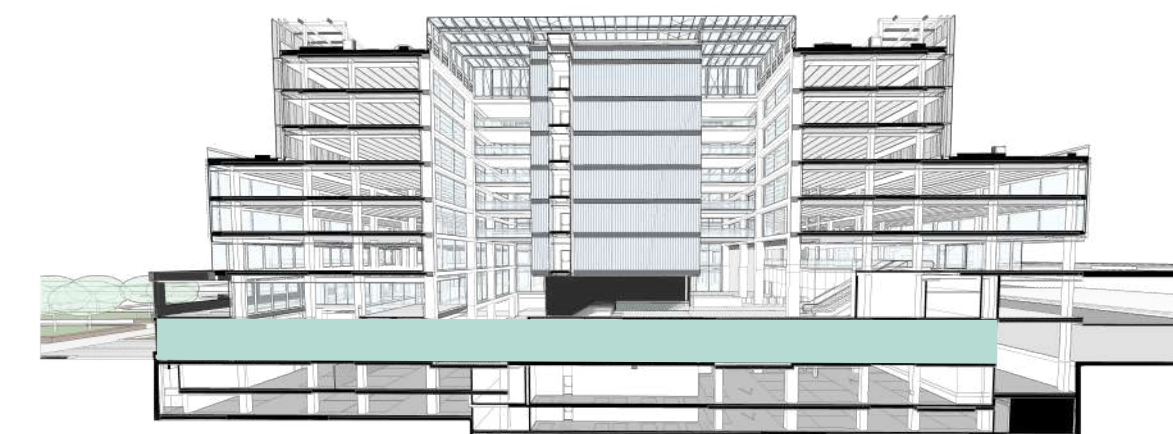
SÓTANO 2



SÓTANO 1



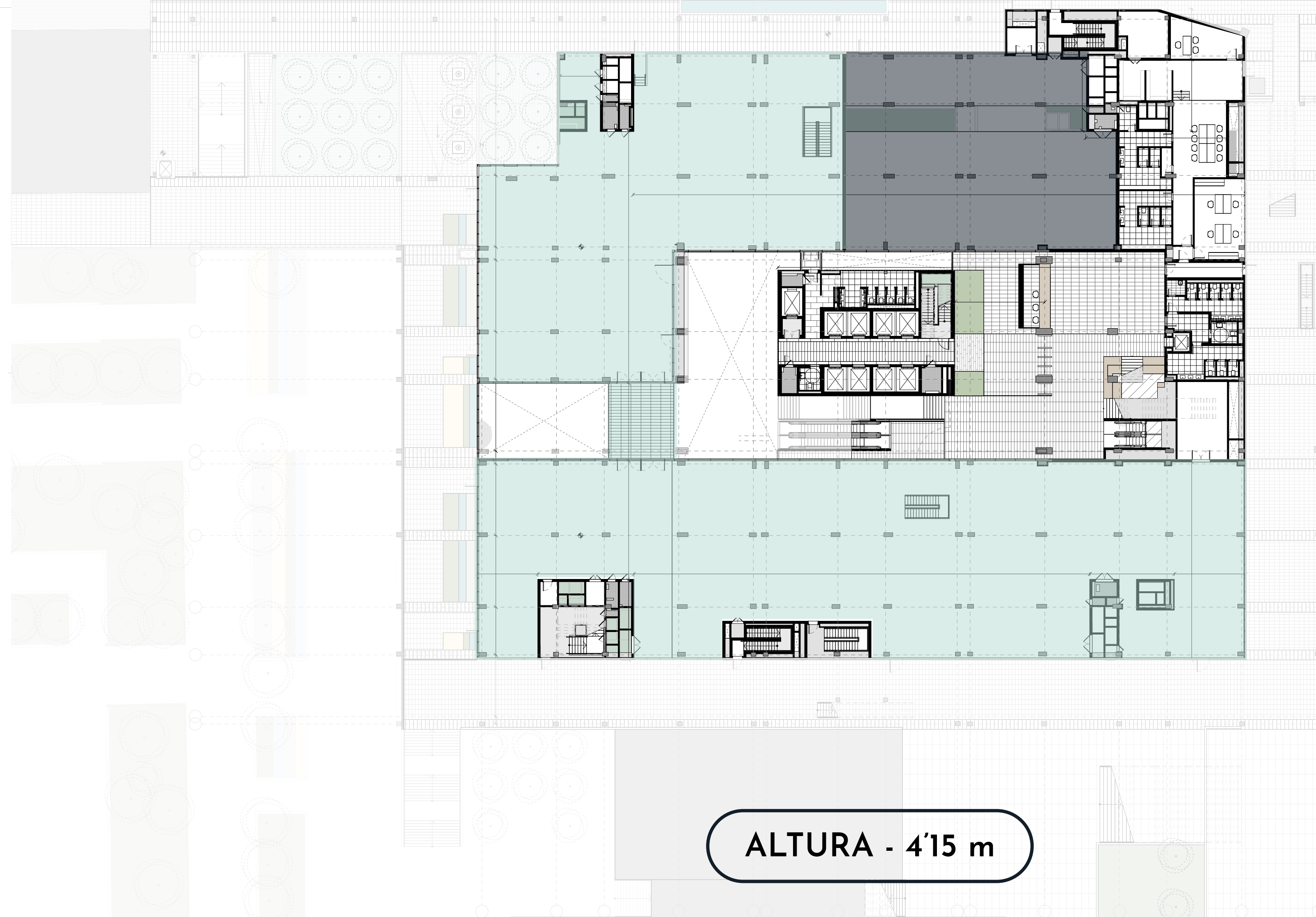
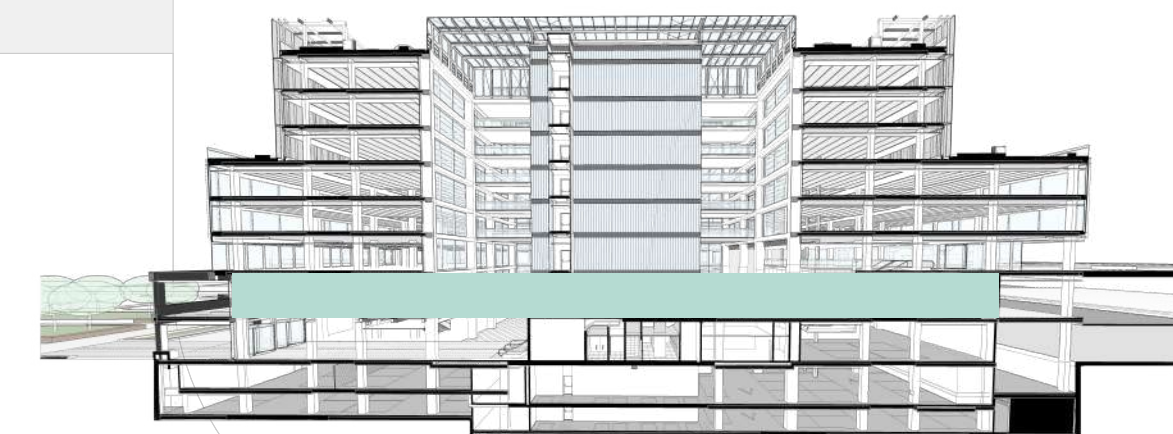
PLANTA PLAZA RUIZ PICASSO



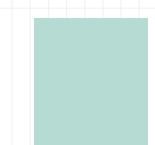

ALTURA - 3'90 m

-  CAFETERÍA
-  EVENTOS
-  AUDITORIO

PRIMERA PLANTA

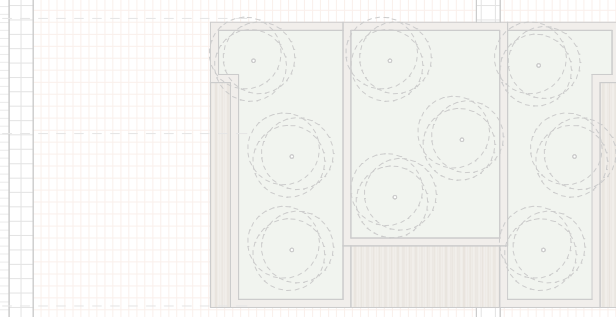
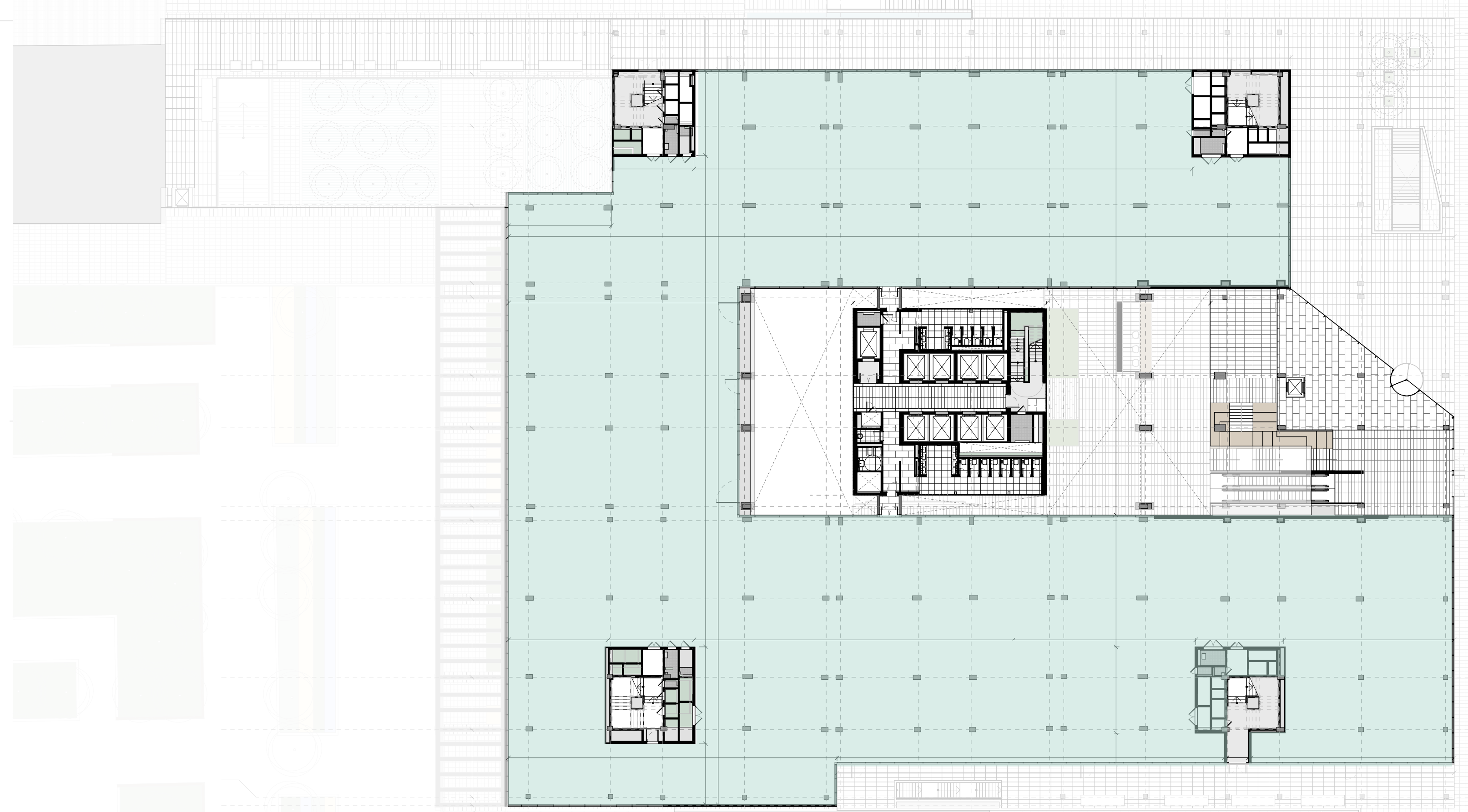
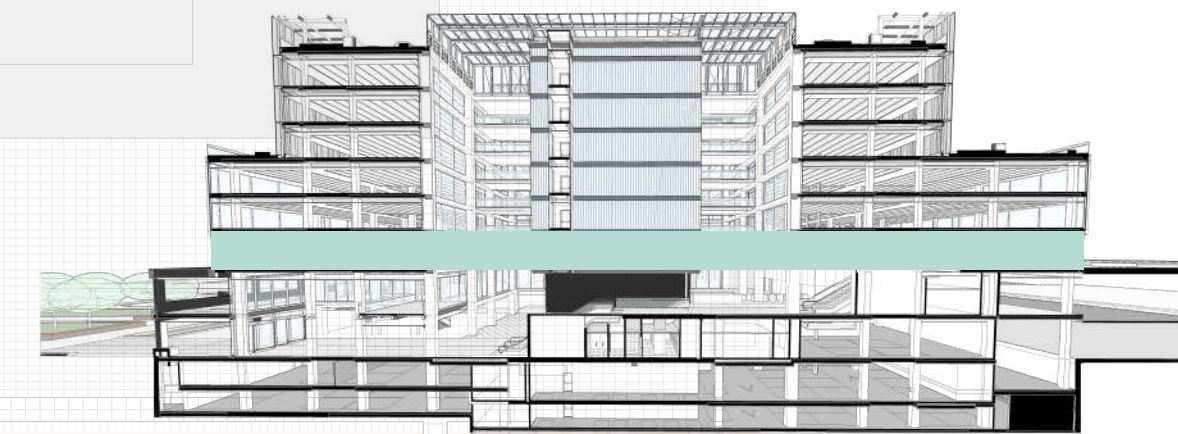


ALTURA - 4'15 m

-  ESPACIO FLEXIBLE
-  ESPACIO MULTIUSOS



SEGUNDA PLANTA

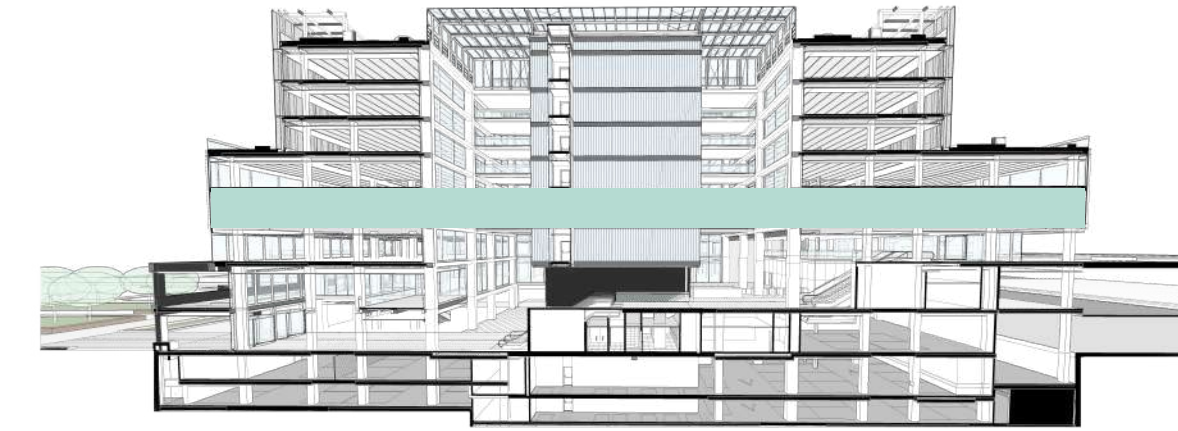


ESPACIO MULTIUSOS
RETAIL/OFICINAS

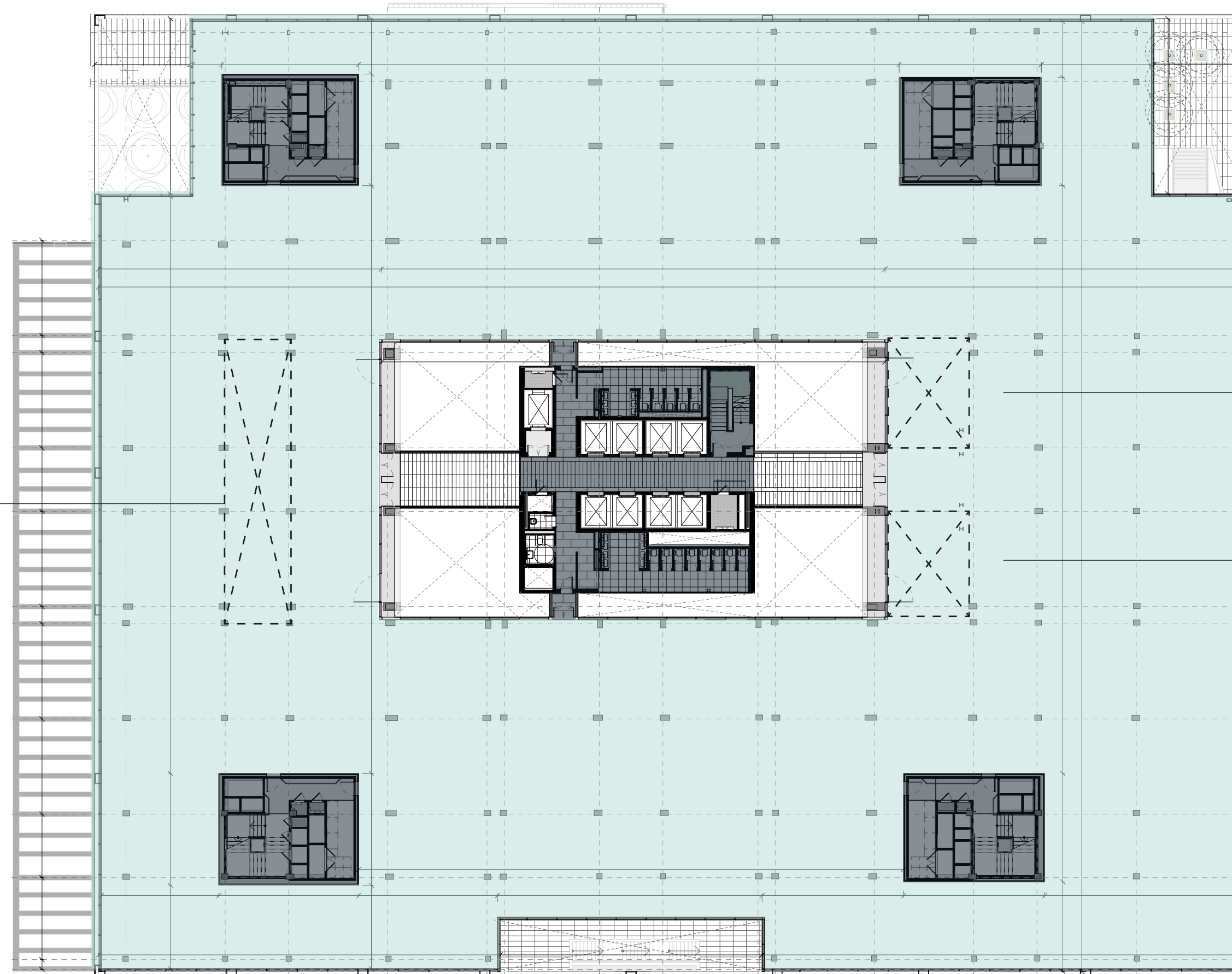
ALTURA - 3'50 m



TERCERA PLANTA



Espacio para potencial escalera para comunicar las plantas tercera y cuarta.



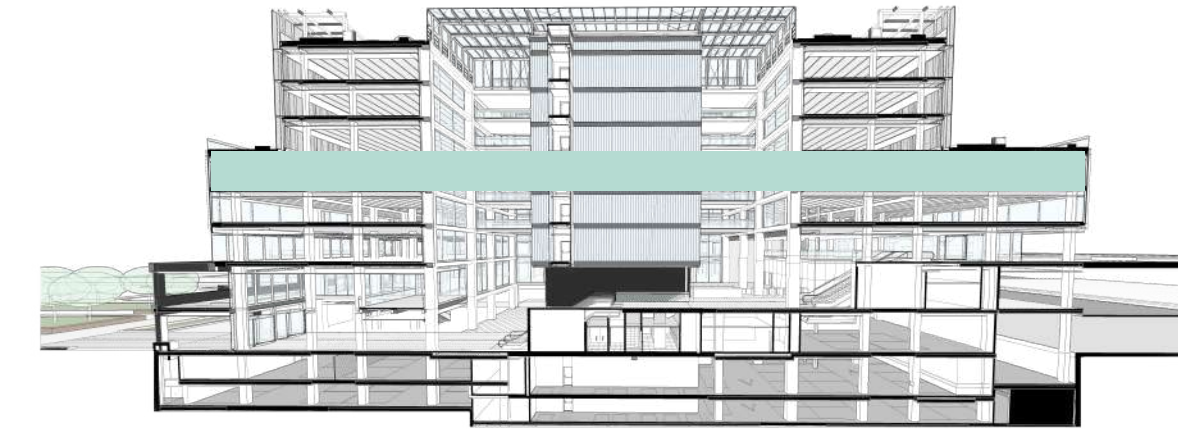
Espacios para potencial escalera para comunicar las plantas tercera y cuarta.

ALTURA - 3'00 m

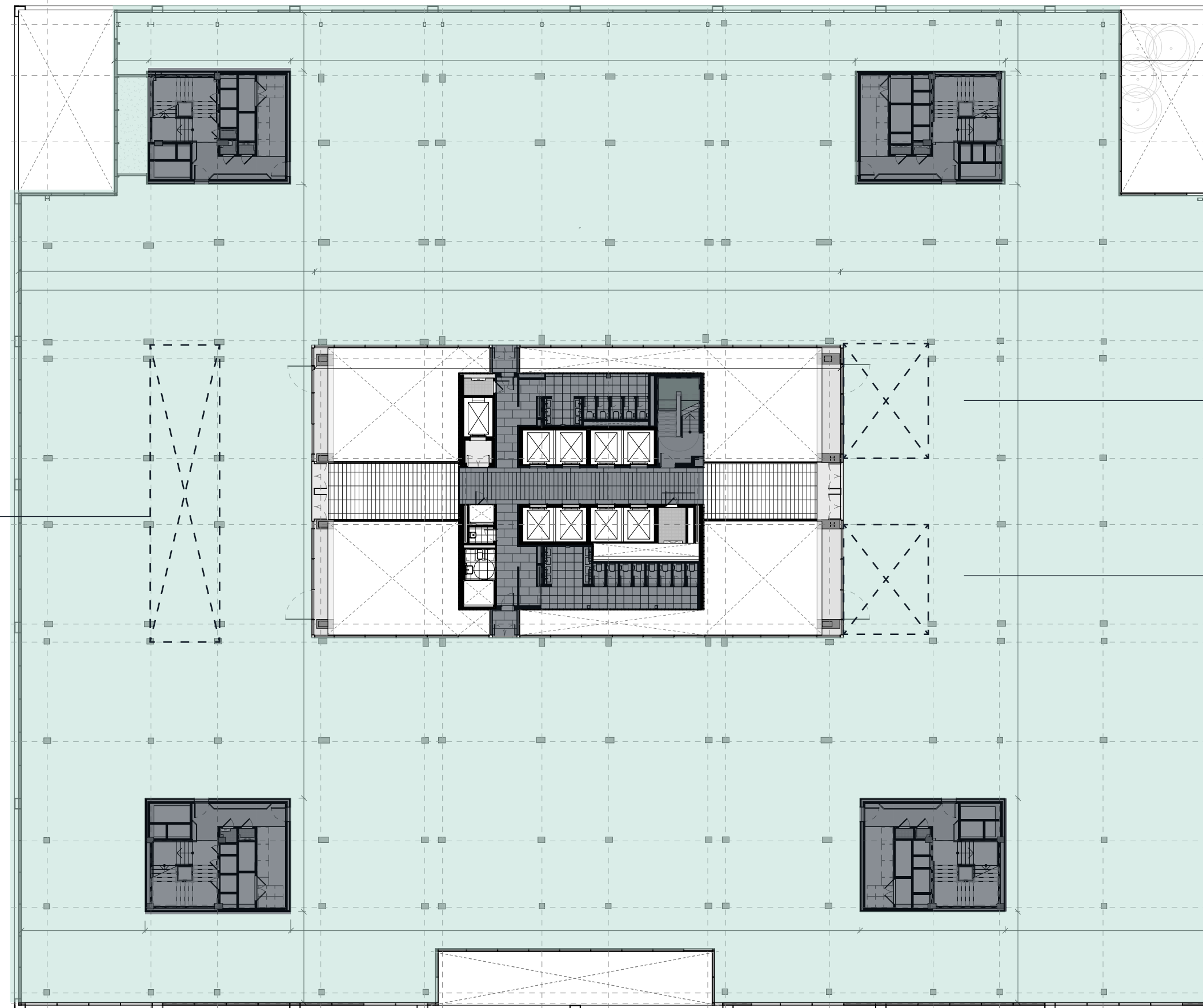
- ÁREA DE OFICINAS
- ZONAS COMUNES



CUARTA PLANTA



Espacio para potencial escalera para comunicar las plantas tercera y cuarta.



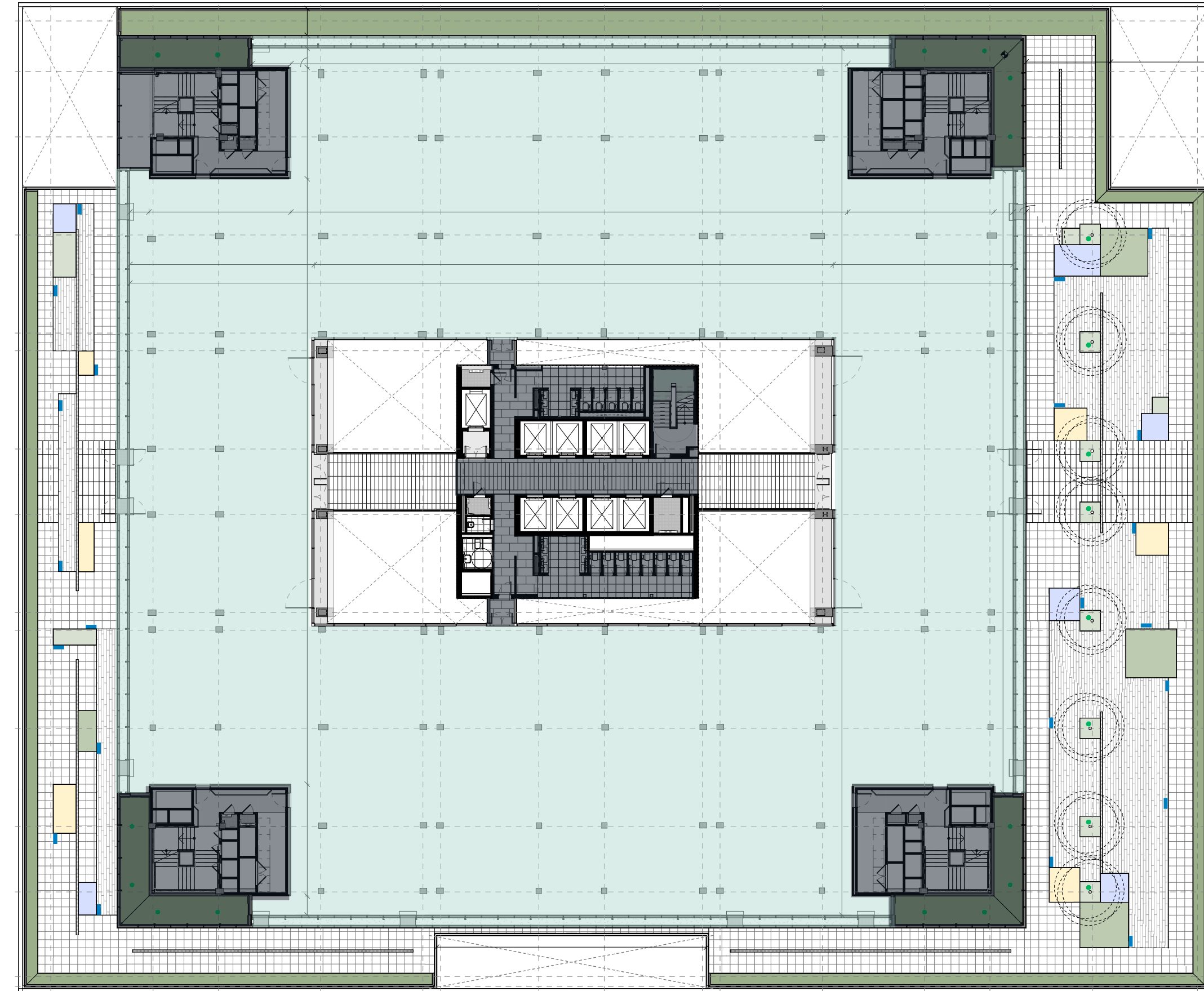
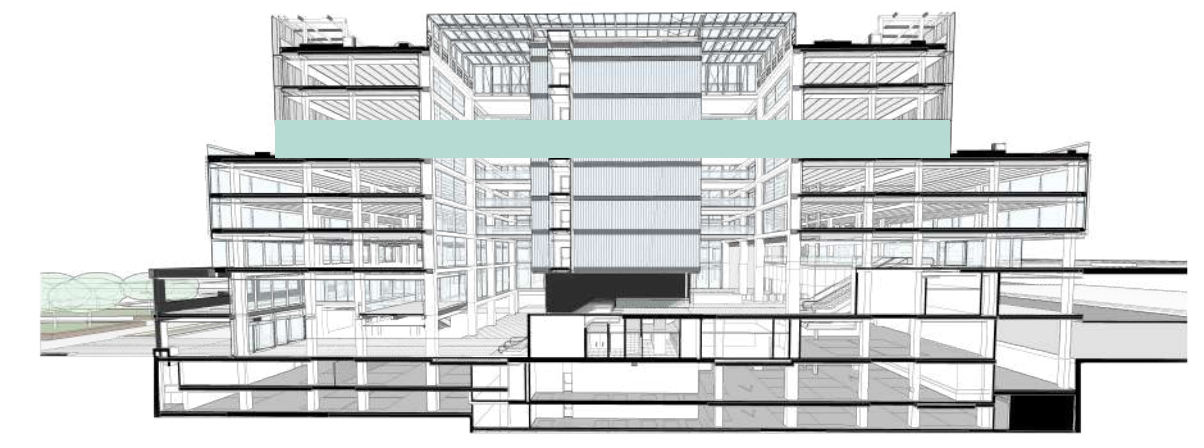
Espacios para potencial escalera para comunicar las plantas tercera y cuarta.

ALTURA - 3'00 m

- ÁREA DE OFICINAS
- ZONAS COMUNES



QUINTA PLANTA

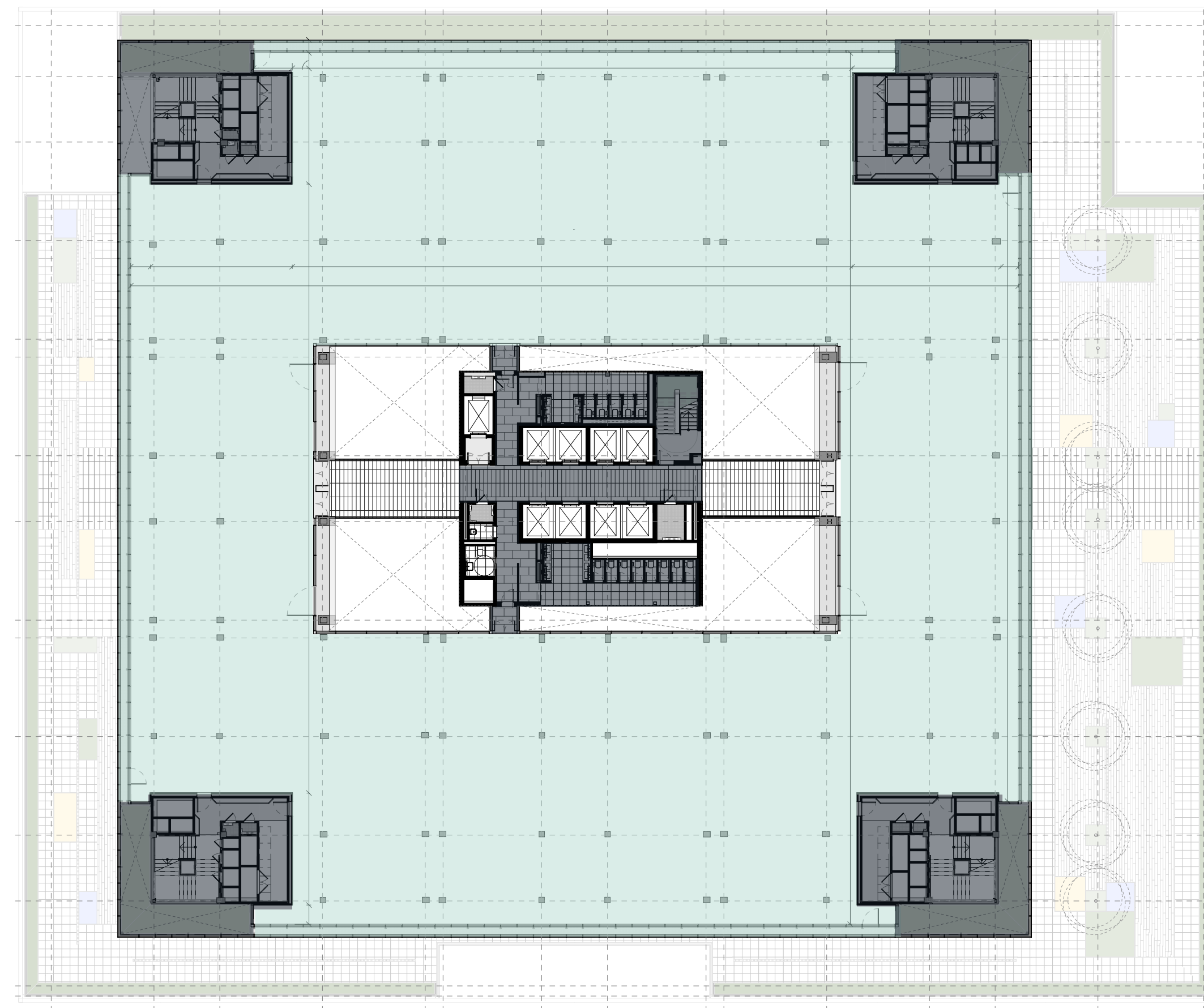
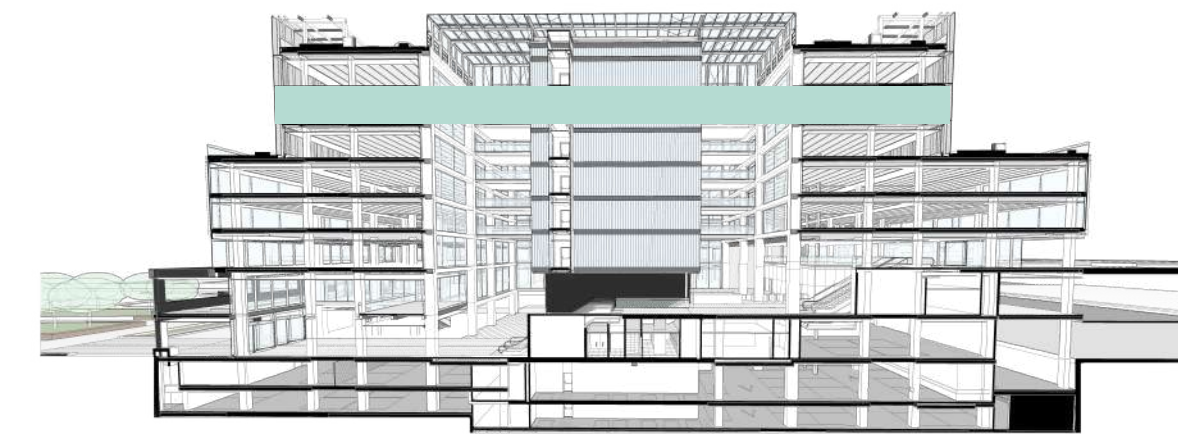


ALTURA - 3'00 m

- ÁREA DE OFICINAS
- ZONAS COMUNES



SEXTA PLANTA

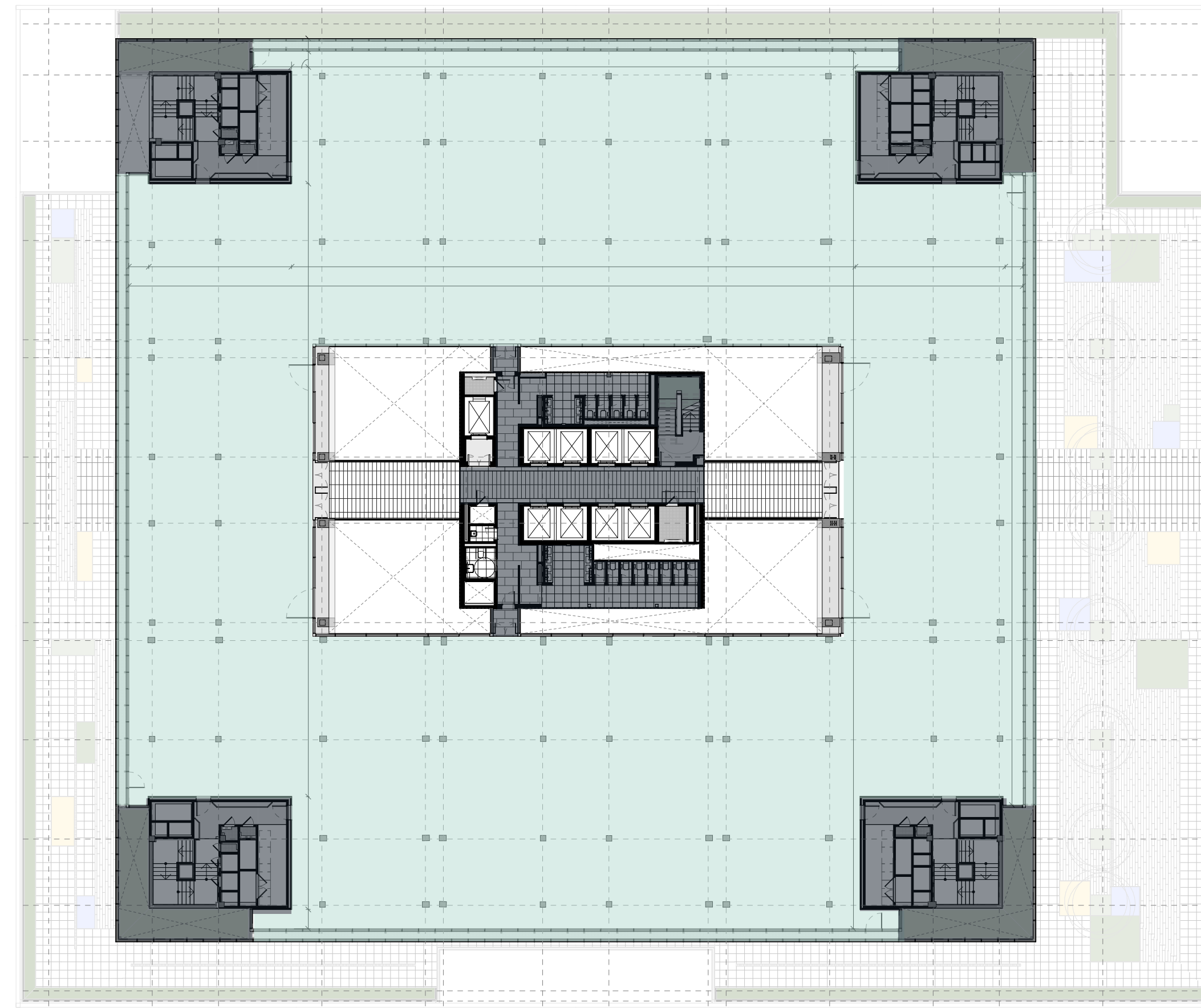
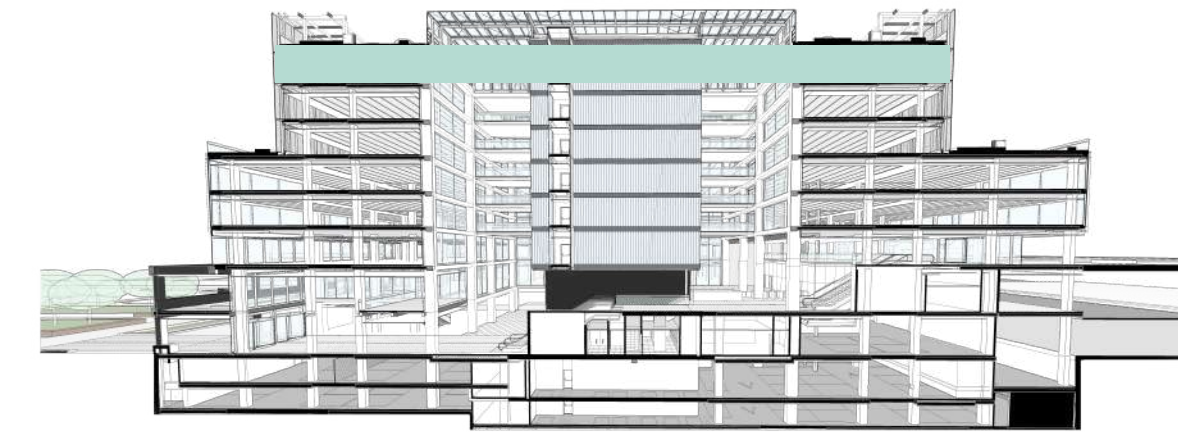


ALTURA - 3'00 m

- ÁREA DE OFICINAS
- ZONAS COMUNES



SÉPTIMA PLANTA

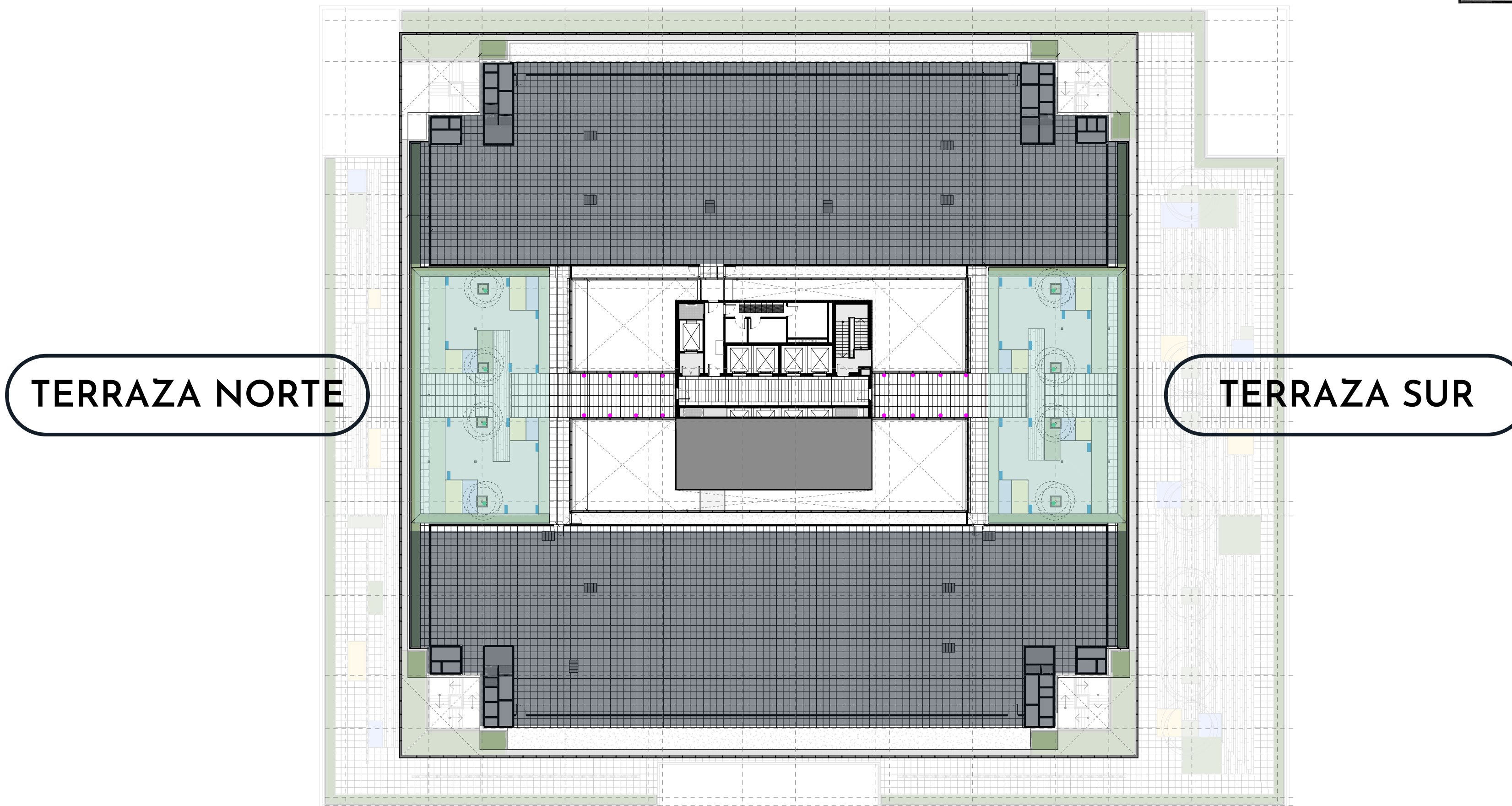
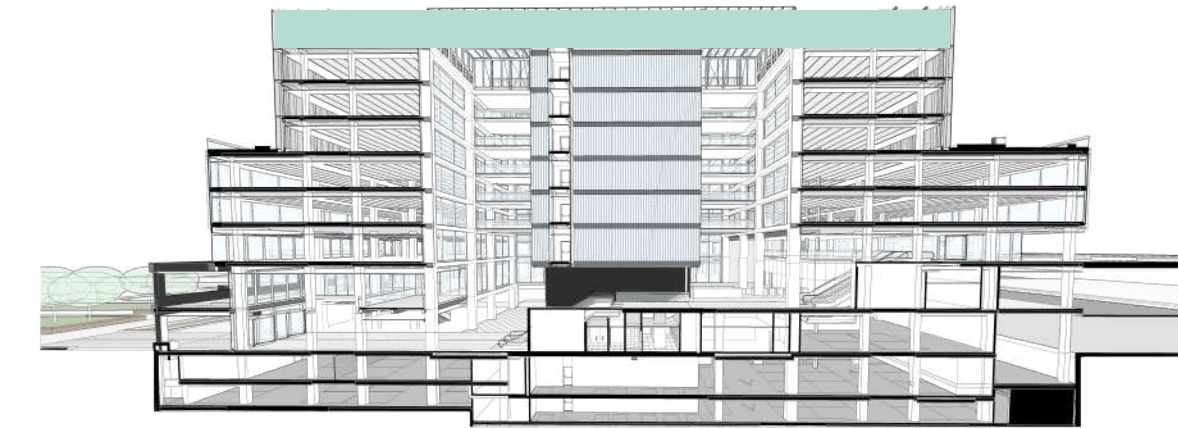


ALTURA - 3'00 m

- ÁREA DE OFICINAS
- ZONAS COMUNES



ROOFTOP

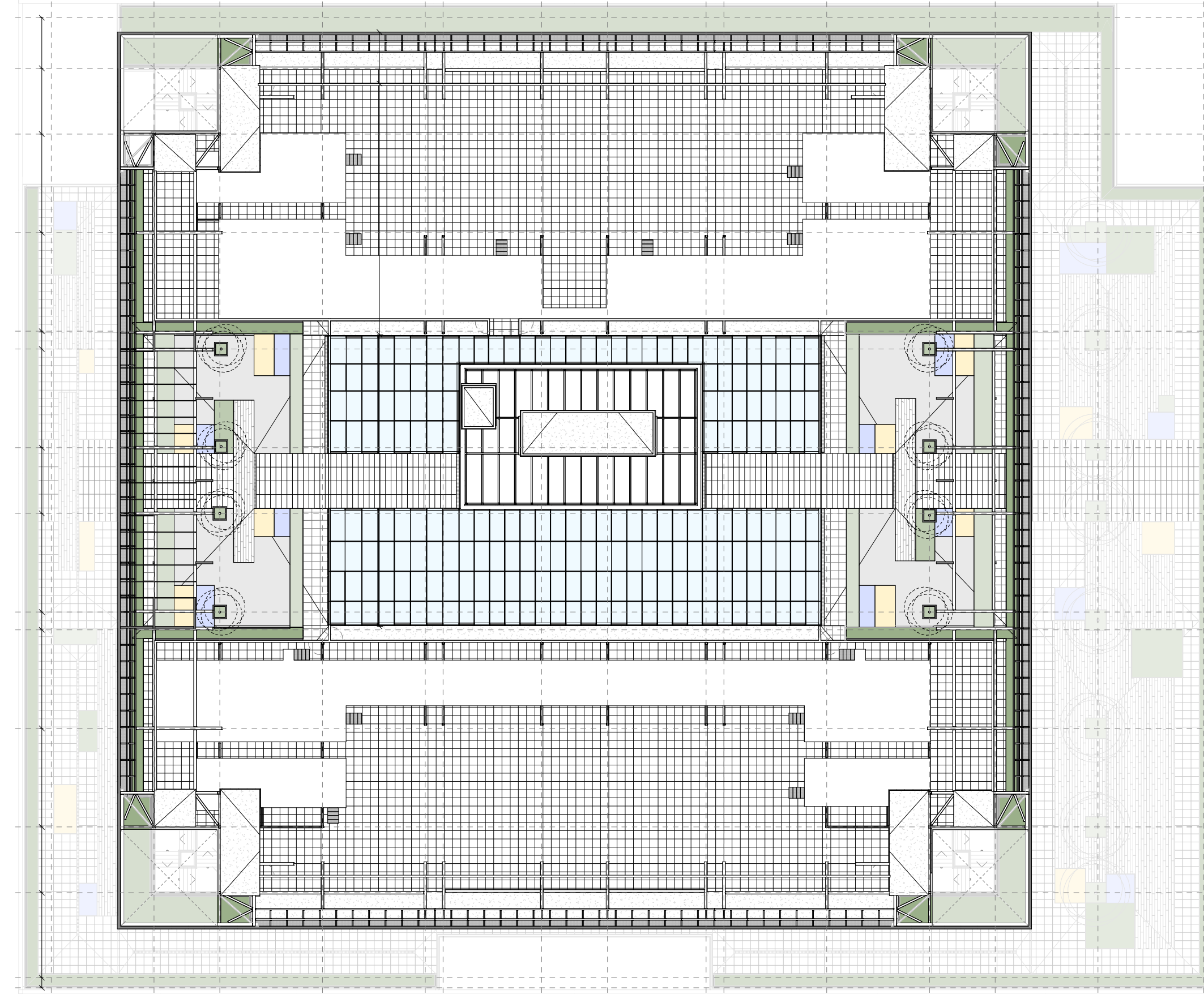
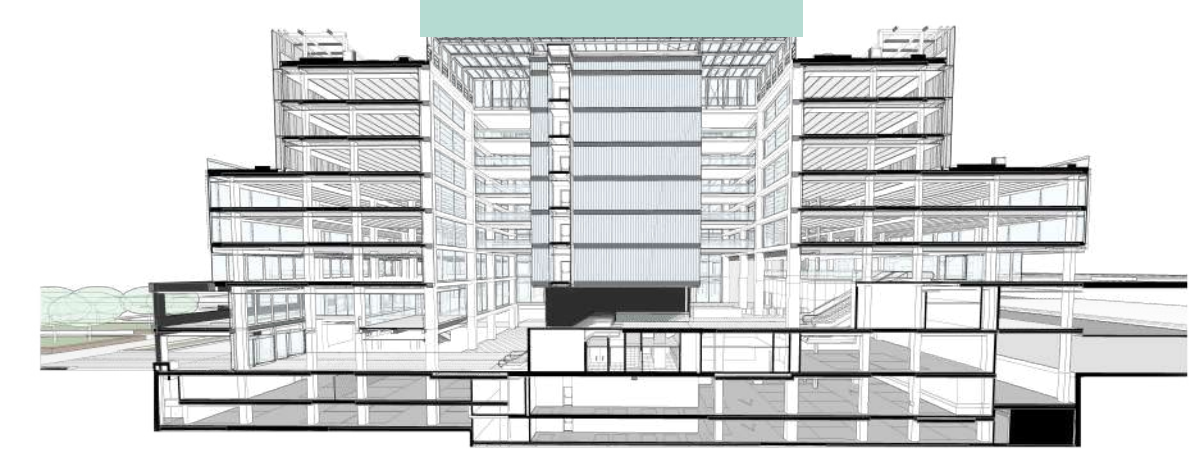


TERRAZA NORTE

TERRAZA SUR

-  TERRAZAS
-  MEP

CUBIERTAS





RUIZ PICASSO 11